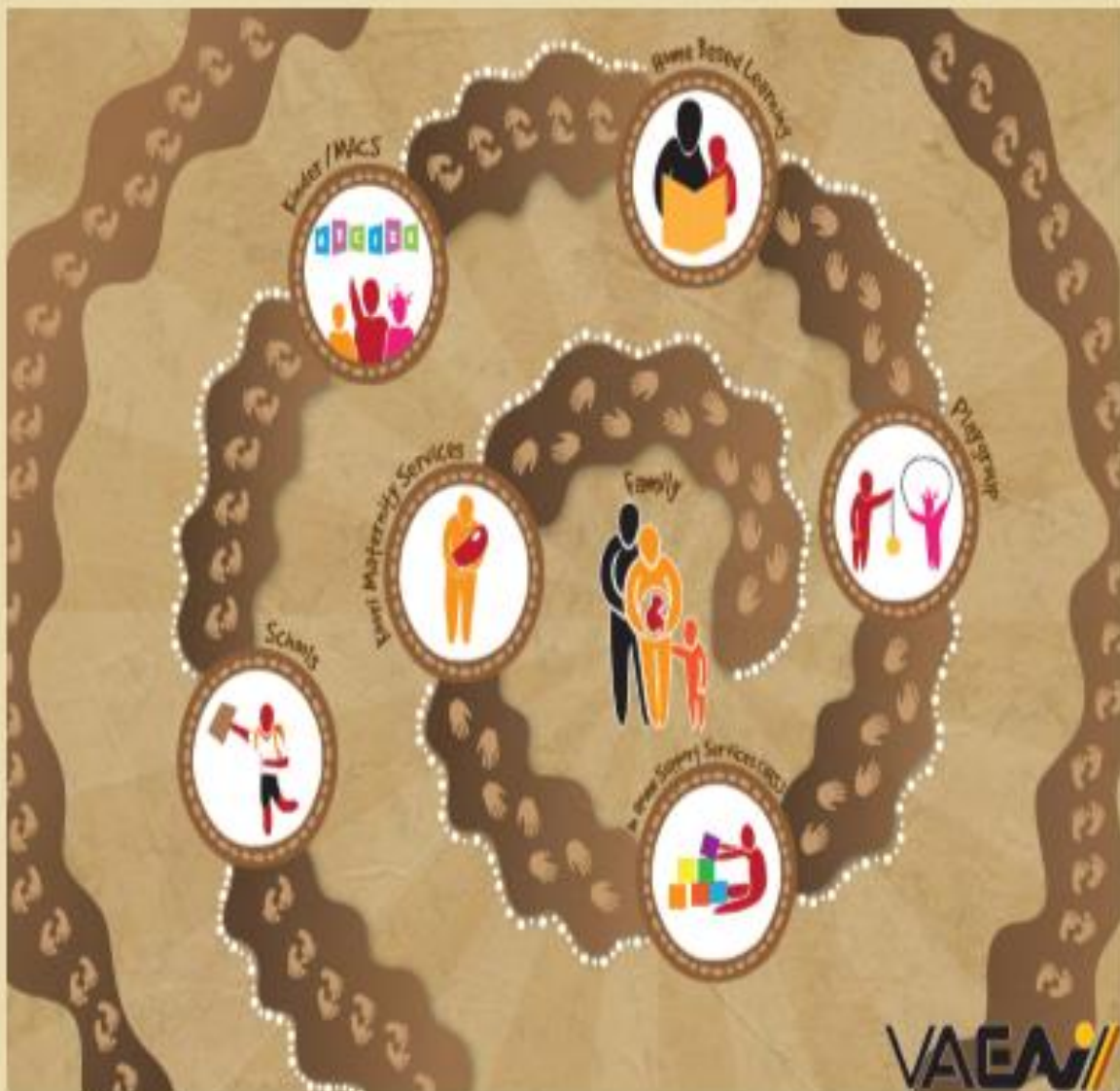




ABORIGINAL EARLY CHILDHOOD PROGRAMS AND SERVICES VICTORIA





Aboriginal Organisations



The Aborigines Advancement League - The AAL

The Aborigines Advancement League is located in Thornbury in Melbourne's northern suburbs. Its aim is to establish and administer programs which improve the social, economic and cultural circumstances of Aboriginal people. These include family support, food assistance, home visits, advocacy, counselling and educational programs, drug and alcohol awareness and funeral services.

Telephone: 9480 7777 AAL website www.aal.org.au



Victorian Aboriginal Education Association Incorporated - VAEAI

The Victorian Aboriginal Education Association Incorporated provides advice and supports the provision of education and training that reinforces our community cultural identity. VAEAI also works to increase awareness within the wider community about Koorie culture and aspirations in education and Training. VAEAI represents the Koorie community in relation to education policy and strategy development at the local, state and national levels by liaising with governments, department offices and education and training providers. VAEAI's local advisory arrangements are solidly embedded in local communities through Local Aboriginal Education Consultative Groups (LAECGs). LAECGs are the constituent units of VAEAI and all 32 state-wide LAECGs have representation on the VAEAI Representative Council.

Telephone: 9481 0800 VAEAI website www.vaeai.org.au



Victorian Aboriginal Community Services Association Limited - VACSAL

The Victorian Aboriginal Community Services Association Limited (VACSAL) is the recognised state-wide peak advisory body on Aboriginal Community issues. VACSAL is a community based, community controlled organisation, comprising representatives from Koorie organisations across the State. As well as having an advisory role VACSAL also delivers and manages a range of critical community services across Victoria. VACSAL works from the following philosophical base in all its advocacy work and service provision: Community and individual choices; self determination and managing change; strengthening identity; strengthening culture; and strengthening families.

Telephone: 9416 4266 VACSAL website www.vacsal.org.au



Victorian Aboriginal Community Controlled Health Organisation - VACCHO

The Victorian Aboriginal Community Controlled Health Organisation (VACCHO) is Victoria's peak representative Aboriginal health body and champions community control and health equality for Aboriginal communities. VACCHO is a centre of expertise, policy advice, training, innovation and leadership in Aboriginal Health. VACCHO advocates for the health equality and optimum health of all Aboriginal people in Victoria.

Aboriginal Community Controlled Health Organisations (ACCHOs) have a proud history as sustainable, democratic grassroots organisations that assist in building community capacity for self determination and direct provision of community services. ACCHOs are committed to assisting every Aboriginal person to realise their full potential as a human being and as a member of their community.

Telephone: 9411 9411 VACCHO website www.vaccho.org.au



Secretariat of National Aboriginal and Islander Child Care - SNAICC

The Secretariat of National Aboriginal and Islander Child Care (SNAICC) is the national non-government peak body in Australia representing the interests of Aboriginal and Torres Strait Islander children and families. SNAICC has a membership base of Aboriginal and Torres Strait Islander community-based child care agencies, Multi-functional Aboriginal Children's Services (MACS), crèches, long day care child care services, pre schools, early childhood education and care services, early childhood support organisations, family support services, foster care agencies, link up and family reunification services, family group homes, community groups and voluntary associations, and services for young people at risk.

Telephone: 9489 8099 SNAICC website www.snaicc.org.au






Victorian Aboriginal Childcare Agency - VACCA

VACCA is the lead Aboriginal child and family welfare organisation in Victoria, protecting and promoting the right of Aboriginal children, young people, families and the community. VACCA provides programs and services to strengthen Aboriginal culture, encourage best parenting practices, and advise governments in relation to child abuse and neglect in the Aboriginal community.

MAPPING

Aboriginal Early Childhood Services in Victoria

Locations of Aboriginal Early Years Services

	Aboriginal Best Start
	Koorie Maternity Services
	Koorie Supported Playgroups
	Koorie HIS/HBL
	Children and Family Centres (CFCs)
	Multifunctional Aboriginal Children's Services (MACS)

Regional map of Victoria showing VAEAI Regions and LAECGs



Aboriginal Best Start

Aboriginal Best Start is a Victorian Government early years initiative. Aboriginal Best Start supports families, caregivers and community to provide the best possible environment, experiences and care for young children in the important early years from pregnancy to school. The program aims to improve the health, development, learning and wellbeing of Aboriginal children aged 0–8 years.

Locations: Horsham, Latrobe Valley/Baw Baw, Horsham, East Gippsland, Geelong, Echuca and Dandenong.

For further information contact VACSAL Ph: 03 9416 4266

Multifunctional Aboriginal Children's Services (MACS)

MACS provide early start Kindergarten programs, long day care and at least one other form of child care activity such as outside school hours care, play groups, nutrition programs and/or parenting programs to the community based on local needs.

MACS Victoria locations:

YAPPERA CHILDREN'S SERVICES www.yaperachildreancesservices.com	THORNBURY Ph: 9416 8787
GUNAI LIDJ www.ramahyuck.org	MORWELL Ph: 03 5143 1644
BERRIMBA www.njemda.com.au	ECHUCA Ph: 03 5481 1900
LULLAS CHILDREN AND FAMILY CENTRE www.lullascentre.com	SHEPPARTON Ph: 03 5831 5479
BUNG YARND A www.laketyersaboriginaltrust.com.au	LAKE TYERS Ph: 03 5156 5718
ROBINVALE www.mvac.org.au	ROBINVALE Ph: 03 5051 8950

Children and Family Centres Victoria

Victoria has two Aboriginal Children and Family Centres; one in the City of Whittlesea and one in the Shire of East Gippsland. The Centres provide a dynamic mix of early childhood and family support services, including long day care, early start kindergarten, visiting professionals such as maternal child health nurses, and counselling.

Locations

Bubup Wilam www.bubupwilam.org.au	Thomastown Ph: 03 8459 4800
Dala Yooro www.gegac.org	Bairnsdale Ph: 03 5150 0700

Koorie Maternity Services

Koorie Maternity Services is a Victorian based program operating from local Aboriginal Community Controlled Health Organisations and delivering holistic culturally appropriate maternity services to the Aboriginal Community, focusing on the areas of antenatal, pregnancy and postnatal care.

Locations: Bairnsdale, Fitzroy, Dandenong, Echuca, Geelong, Mildura, Mooroopna, Morwell, Swan Hill, Wodonga and Warrnambool

For further information contact VACCHO Ph: 03 9411 9411
www.vaccho.org.au

Koorie Education workforce

Koorie Engagement Support Officers (KESOs) can be assigned to any early childhood education and care service or school where contact with Koorie families may be required.

Early Start Kindergarten

Koorie children are eligible for 15 hours of free or low-cost kindergarten a week.

For more information contact DET

Koorie Families as First Educators

Koorie families as First Educators (KFFE) supports Koorie families to provide a strong foundation for their children's early learning and development by delivering high quality, culturally responsive evidence based parenting support programs.

For further information visit: www.education.vic.gov.au

The Early Years Compact

The Early Years Compact is a ten year agreement between DET, DHHS and Local Government - represented by the Municipal Association of Victoria (MAV). The Compact is part of the agenda for young children and their families within the Victorian early years sector, and commits to lifting outcomes for this cohort through establishing a closer working relationship between state and local government. In particular, it focuses on improving outcomes for children and their families from antenatal period to school entry.

For further information contact Department of Education and Training

In Home Support and Home Based Learning Programs

The purpose of Koorie IHS/HBL is to build parent capacity and wellbeing to produce positive impacts on the early learning and development of Koorie children through programs that are evidence based and culturally safe.

Locations: Melbourne, Shepparton, Geelong, Bairnsdale, Swan Hill and Mildura

Further information is available on either the VAEAI or DET Websites
www.vaeai.org.au / www.education.vic.gov.au

Koorie Pre School Assistants Program

The KPSA supports the attendance of Koorie children in Kindergarten Services, encourages community involvement in the development and delivery of Kindergarten services and supports Kindergartens to embrace Koorie culture.

The KPSA is delivered by: Ballarat and District Aboriginal Cooperative, Bendigo and District Aboriginal Cooperative, Mildura and District Aboriginal Services, Loddon Mallee Preschool Association (Swan Hill), Wathaurong Aboriginal Cooperative (Geelong), Winda Mara Aboriginal Cooperative (Heywood), Gunditjmara Aboriginal Cooperative (Warrnambool), Uniting Care Gippsland (Sale), Save the Children (East Gippsland), Njernda Aboriginal Cooperative (Echuca), Goolum Goolum Aboriginal Cooperative (Horsham) and the Victorian Aboriginal Child Care Agency (North Metro Region)

For further information visit: www.education.vic.gov.au

Marrung

Marrung is Victoria's Aboriginal Education Plan. It is a ten-year strategy (2016-2026) to ensure that all Koorie Victorians achieve their learning aspirations and realise the full benefits of their education.

For further information visit: www.education.vic.gov.au